



335 W. Prairie Street

Wautoma, WI 54982

www.wautomapeacelutheran.org

peacelutheran@centurytel.net

**Pastor Roger G. Riedel**

Office: 920.787.3856

Home: 920.787.7078 Cell: 920.765.2883

revriedel8@juno.com

**Worship** every Sunday @ 9 am

every Thursday @ 7 pm

**Bible Study** Sundays @ 8 am

Tuesdays @ 9 am

Thursdays @ 9 am & 7:45 pm

**PeaceMakers** 2nd & 4th Wed. @ 1 pm

**Sunday School** Sundays @ 10:15 am

**Pioneers** 2nd & last Sunday @ 1 pm

**JAM Session** 1st & 3rd Wednesday 5:30 pm



*Messenger of Peace* is a publication of:  
Peace Evangelical Lutheran Church,  
Wautoma, Wisconsin.

#### Purpose

*Messenger of Peace* serves the Peace Ev.  
Lutheran Church family with information  
about people and events that are part of the  
Peace ministry and with articles that  
encourage Christian living.

#### Articles

Please forward information and articles to  
Christine in the office by the third Sunday of  
each month. Put in the office or email it to:  
peacelutheran@centurytel.net.

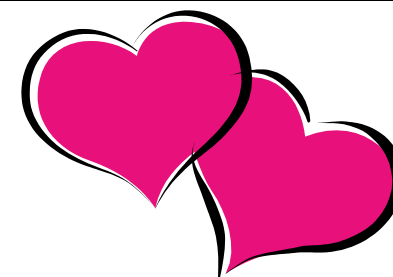


# Messenger of Peace

February 2015



## 2014 Annual Report



### IN THIS ISSUE

#### Page

Pastor's Message.....2

Committee & Group

Members.....3

Ministrations.....4

Board of Elder's.....5

Bible Classes.....5

Committees & Groups

Audit Committee.....6

Edu-Comm Committee.....6

Finance Committee.....6

Maintenance.....7

Worship Committee.....7

Church Library.....7

JAM Session.....8

Lutheran Pioneers.....8

LWMS.....9

Mornings With Mommy....9

Sunday School.....9

Financial Reports.....10-11

Calendar.....Insert

Church News

Midweek Lenten Dinners.12

Circle of Peace.....12

Pin Car Derby.....12

Is Your Family Involved?...12

News About Our

Church Family.....13

Synod News.....14

A Short Story.....15

### Lent & Easter Schedule

**Ash Wednesday**

Wednesday, February 18

Worship with Holy Communion at 12 pm & 7 pm (same service)  
(No Worship on Thursday, February 19)

**Midweek Lenten Services**

Thursdays, February 26, March 5, 12, 19 and 26

Dinner 5-6:30 pm

(The entire family is invited to come for a free dinner and great  
fellowship prior to worship)

Worship 7 pm

**Easter for Kids**

Sunday, March 22 11:30 am

**Palm Sunday**

Sunday, March 29

Worship 9 am

**Maundy Thursday**

Thursday, April 2

Worship with Holy Communion 12 pm & 7 pm (same service)

**Good Friday**

Friday, April 3

Good Friday Worship 12 pm

Tenebrae Worship 7 pm

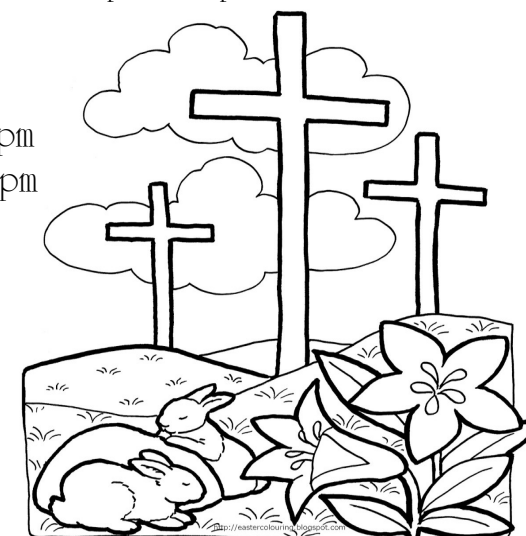
**Easter**

Sunday, April 5

Sunrise Worship 7 am

Easter Breakfast 8 am

Easter Song Service 9 am



**“For God so loved the world  
that He gave His one and only Son,  
that whoever believes in Him  
shall not perish but  
have eternal life.”**

John 3:16



## Piercing the Darkness

If you have ever been suddenly aroused from a deep sleep by an unexpected flip of a light switch in your bedroom, then those words ‘piercing the darkness’ really mean something to you. Or if you can recall how a summer thunderstorm brought a quick, bright burst of lightning which shot you bolt-upright in bed by its brilliance, than you know what I mean with those words ‘piercing the darkness.’ And if you have been shocked out of a sinful stupor by the stunning and radiant beams that flow from the mouth of our omnipotent Lord, dear Christian reader, than you have certainly experienced the words, ‘piercing the darkness.’

Throughout this season of Epiphany the light that has come into this cold, dark, and wicked world shines with a brilliance that reaches every human heart. Not everyone reacts in the same way, but the light does inspire some sort of reaction from every single sin-loving, God-hating sinner that has ever walked the dusty streets of this godless earth. Some cower in fear, rightly expecting severe judgment from the King of kings. Others lash out violently, irrationally plotting against the One who alone brings hope and healing to troubled consciences and hearts. Still others, whom the Holy Spirit has graciously touched through the power of the life-changing, light-emitting good news of the Gospel, embrace the light with the God-given gift of faith.



Jesus lovingly turns on the light of His Word and invites us to follow Him in faith. He says, **“I am the light of the world. Whoever follows Me will never walk in darkness, but will have the light of life.”** John 8:12 (NIV1984) The Lord who came to bring light to us sinful creatures is the One who actually is light. His life of perfect obedience and His blood so freely spilled on the cross have paid our debt to the holy God. Jesus has earned forgiveness of sins for all people, and calls on everyone to believe it. To those whom the Holy Spirit has reached, something amazing has happened: sinners who had been lost in sin and blind to the message of God’s salvation have seen a great light! The Gospel of Jesus Christ has pierced the darkness of our sin and unbelief. We are no longer enemies of the Lord, but His friends.

More than that, we are members of God’s family, through faith in Jesus. Peter describes Christians this way: **You are a chosen people, a royal priesthood, a holy nation, a people belonging to God, that you may declare the praises of Him who called you out of darkness into His wonderful light.** 1 Peter 2:9 (NIV1984)

I don’t know about you, but for me, once the lamp has been turned on, it can be difficult to fall back asleep. That is true in our lives of faith, as well. And we dare not fall asleep in our faith, only to drift off into the darkness again. Since our Lord, in grace, has shined His Word into our hearts and lit us up with the fire of the Holy Spirit, we are surrounded by the light of salvation. Jesus’ atoning sacrifice has rescued us from eternal darkness and redeemed us for a life of love, obedience, and service in our heavenly Father’s kingdom. Walk in the light of God’s Word. Run away from temptation and sin, those things we have committed under cover of darkness. Flee in faith and Christian love to our Lord.



The Spirit-inspired words of the apostle Paul offer both a fitting reminder and encouragement to us all. **You were once darkness, but now you are light in the Lord. Live as Children of light (for the fruit of the light consists in all goodness, righteousness and truth) and find out what pleases the Lord.** Ephesians 5:8-10 (NIV1984) With God’s help, we now live and will continue living in the light of God’s Word, until we bask in the eternal light of Jesus’ glory.

Pastor Roger Riedel

## A Short Story

Our 2015 “A Short Story” series will offer a collection of articles that provide scriptural answers to questions that people often ask or wonder about Christianity, such as “What happens when we die?”

and “God doesn’t always answer my prayers-why?”

These articles are designed to help you reach out to people with God’s Word– to give you the knowledge to answer some of life’s biggest questions.

We hope you enjoy this year’s series: “Fair Questions – Honest Answers.”



## What Happens To Us When We Die?

What happens to us when we die? What an important question, because we all need and want to know the answer!

Many people attempt to guess at an answer, even people whom many others trust! The guesses are all over the place. Some people think that we will reincarnate as a new life after we die. Others think we continue as a ghost over a favorite spot or maybe as an angel over a favorite friend. Our eternal God gives the trustworthy answer in the Bible for his believers. He moved one of the authors of the Scriptures to write:

**Brothers, we do not want you to be ignorant about those who fall asleep, or to grieve like the rest of men, who have no hope. We believe that Jesus died and rose again and so we believe that God will bring with Jesus those who have fallen asleep in him. According to the Lord’s own word, we tell you that we who are still alive, who are left till the coming of the Lord, will certainly not precede those who have fallen asleep. For the Lord himself will come down from heaven, with a loud command, with the voice of the archangel and with the trumpet call of God, and the dead in Christ will rise first. After that, we who are still alive and are left will be caught up together with them in the clouds to meet the Lord in the air. And so we will be with the Lord forever. Therefore encourage each other with these words.** (1 Thessalonians 4:13-18)

We no longer have to grieve like everyone else who may still be guessing about what happens to us when we die. The question has been answered for us. By his death, Jesus paid for our sins. By his resurrection, Jesus guarantees that those who believe in him will have life with him after death. We will spend eternity with him in glory!

Now, since we know that those who fall asleep in Jesus will enter life in heaven, we want to dedicate ourselves to reading, studying, and applying God’s Word! We want to make sure that all our loved ones know the truth about God’s love for them in Christ, so that trusting our Savior we don’t have to wonder what will happen to us when we die. We know with confidence that we will be together forever with the Lord in heaven.

For more Questions & Answers, go to [www.WhatAboutJesus.com](http://www.WhatAboutJesus.com), then Questioning God.



## Sharing Hope

An event to learn more about sharing your Christian hope with others.

**Where:** Fox Valley Lutheran High School  
5300 North Meade Street, Appleton, Wisconsin

**When:** Thursday, February 12, 2015 6-8 pm

### Itinerary:

6 pm Complimentary Buffet Supper  
6:30 pm Devotion and Introductions  
7 pm Presentations on opportunities for you to get involved in ministry work!  
8 pm Displays and time to find out details about opportunities!

*Funded by a grant, WELS Women's Ministry, WELS Kingdom Workers, and WELS Institutional Lutheran Ministries will be offering ways for WELS/ELS women to become involved in sharing the gospel. While the emphasis will be on women volunteering to serve, men are also welcome to attend the meeting.*

To register, please go to the Sharing Hope website at [welswomen.net/sharinghope](http://welswomen.net/sharinghope).

You MUST register to attend!

## Severe Flooding in Malawi

*"If one part [of the body] suffers, every part suffers with it; if one part is honored, every part rejoices with it.*

*Now you are the body of Christ."* (1 Corinthians 12:26-27)

Some of our fellow members of God's church are suffering. A few months ago, Malawi was suffering a severe drought. Malawi went from one extreme to another. Days of heavy rains resulted in widespread and severe flooding, destroying homes, crops, and lives. Many congregations and perhaps thousands of members of the Lutheran Church of Central Africa-Malawi, our sister synod, live in the devastated areas and have been severely affected by this. We are not yet aware of the full extent of the damage since many congregations in remote areas are hard to reach on the best days. Missionaries in Malawi have been in contact with Christian Aid & Relief to begin a request for aid. Christian Aid & Relief is making a grant to help with immediate needs and will offer more assistance as needs are determined. Christian Aid & Relief has also reached out to the Central Africa Medical Mission as medical needs are expected to increase.

This situation is one in which members of one body can show our love to others who are suffering. To help our Christian brothers and sisters in Malawi, you can send checks to: WELS, Re: Christian Aid & Relief, Flood Disaster Relief Fund, N16W23377 Stone Ridge Drive, Waukesha, WI 53188-1108.

## Kingdom Workers Seek Volunteers

### CHRISTIAN EDUCATION TRAINING

*Equip members to lead VBS & Sunday School!*

**THE NEED:** The congregation in Bylas would like to develop a vacation Bible school and Sunday School program. They have requested the help of qualified volunteers to teach congregation members the format, purpose, and resources needed to implement a Christian education program at their church.

**GOAL:** To train and mentor Apache Lutheran Mission members to be able to independently lead Christian education programs in order to provide more opportunities for children to hear the gospel message and to encourage them to attend the local Lutheran church for continued education in the Word.

**Where:** San Carlos Apache Reservation in Bylas, AZ

**When:** June 7-21, 2015

**Number of Trainers Needed:** 2-3

**Lodging & Food:** There are several options for housing available. Some meals will be provided. Volunteers need to cover the rest of the meals.

**Itinerary:** Volunteers will spend the first week in cross-cultural mentoring and training of local congregation members to help them develop a vacation Bible school and Sunday School program. The second week, volunteers will assist the congregation members while they lead a week-long VBS program. The final day, volunteers will support the congregation members in leading a Sunday School lesson.

**Cost:** Volunteers are responsible for covering the cost of the trip. If volunteers are interested in fundraising, Kingdom Workers will provide a personal gifting site\* to help focus fundraising efforts.

Cost to the volunteer include airfare, food, and transportation to Bylas, AZ.

**Basic Qualifications:** Experienced VBS and Sunday School leaders/organizers with a heart for teaching, training, and cross-cultural ministry.

**For more information or to apply:**

Contact Laura Harstad

Phone: 262.955.4643

Email: [lhharstad@kingdomworkers.com](mailto:lhharstad@kingdomworkers.com)



# Committee & Group Members

## Church Council

Robert Wedell, President  
Nathan Klusmeyer, Secretary  
DuWayne Bartel, Financial Secretary  
Roger Jansen, Treasurer  
Robert Lang, Maintenance  
Robert Mitchell, Education-Communication

Donald Nelson, Stewardship  
Everett Schulz, Outreach  
Watson Woodruff, Board of Elders  
Pastor Roger Riedel

## Church Secretary

Christine Bohn

## Organists

Jean Bartel  
Verona Kloehn  
Donna Kuenn  
Beth Riedel

## Treasurer

Roger Jansen

## Audit Committee

Dallas Krueger  
Tom Kuenn  
Watson Woodruff

## Budget Committee

Clifford Bliske  
Albert Grunert  
Dallas Krueger

## Finance Committee

DuWayne Bartel, Chairman  
Mary McKay, Asst. Financial Secretary  
Robert Wedell, Officer  
M/M Lynn Anderson, Counters  
Bernice Baranyk, Counter  
M/M Richard Ihlenfeld, Counters  
Dallas Krueger, Counter  
M/M Rod Nelson, Counters  
M/M Watson Woodruff, Counters

## Board of Elders

Watson Woodruff, Chairman  
Pastor Roger Riedel  
James Bower  
Roger Jansen  
James Schroeder

## Lay Altar Assistants

Lynn Anderson  
Nathan Klusmeyer  
Robert Lang  
James Lichtenberg  
James Schroeder  
Robert Wedell

## Worship Committee

Pastor Roger Riedel  
Marilynn Chesbrough, Chairperson  
Jean Bartel, Organist  
Verona Kloehn, Organist  
Megan Kubasta, JAM Session  
Donna Kuenn, Organist  
Beth Riedel, Organist; Sunday School  
Richard Vollrath, HymnSoft Operator  
Watson Woodruff, Elder's

## Computer Music

Samuel Riedel, HymnSoft Operator  
Richard Vollrath, HymnSoft Operator

## Hymn Boards

Samuel Riedel

## Education- Communication Committee

Robert Mitchell, Chairman  
Pastor Roger Riedel  
Barb Bartel  
Ahnsharee Klusmeyer  
Beth Riedel  
Beverly Walker  
Megan Kubasta, JAM Session  
Emily Bohn & Emily Riedel, Library  
Kevin & Christine Bohn, Pioneers  
Joshua Klamm, Sunday School

## JAM Session

Megan Kubasta, Leader  
Pastor Roger Riedel  
Robert Mitchell

## Library Committee/Historian

Emily Bohn, Librarian  
Emily Riedel, Librarian  
Pastor Roger Riedel  
Robert Mitchell

## Pioneers

Christine Bohn, Caravan Counselor  
Kevin Bohn, Trainmaster  
Rebecca Bohn, Junior Leader  
Ahnsharee Klusmeyer, Assistant Leader  
Beth Riedel, Sunbeams  
Emily Riedel, Junior Leader  
Pastor Roger Riedel, Leader & Chaplain  
Robert Mitchell

## Sunday School

Joshua Klamm, Superintendent  
Pastor Roger Riedel  
Beth Riedel, Music; 2/3 yr old  
Emily Riedel, 4K/5K  
Rebecca Bohn, 4K/5K  
Jan Schroeder, 1/2/3 grades  
Christine Bohn, 4/5/6 grades  
Robert Mitchell

## Sound System

Lynn Anderson  
Emily Bohn  
Kevin Bohn  
Rebecca Bohn  
Megan Kubasta  
Zachary Kubasta  
Samuel Riedel  
Richard Vollrath  
Robert Mitchell

## Maintenance Committee

Robert Lang, Chairman  
Kevin Bohn, Maintenance  
Daniel Baranyk, Groundskeeper

## Outreach Committee

Everett Schulz, Chairman  
Pastor Roger Riedel

## Mornings with Mommy

Ahnsharee Klusmeyer, Program Director  
Pastor Roger Riedel  
Everett Schulz

## Stewardship Committee

Donald Nelson, Chairman  
Pastor Roger Riedel

## Circle of Peace Ladies' Group

Ahnsharee Klusmeyer, President  
Bernice Baranyk, Vice-President  
Mary McKay, Treasurer  
Beverly Walker, Secretary  
Pastor Roger Riedel

## LWMS

Marilynn Chesbrough, Reporter  
Barbara Bartel, Spiritual Growth

## Choir

## Long-Range Planning

## Men's Club

## Nominating Committee



**NEW MEMBERS**

Keri Fredin  
 Tom and Donna Kuenn  
 Thurman Matney  
 Kent and Judy Schneider  
 Don and Helen Timmermann

**CONFIRMATIONS**

Rebecca L. Bohn

**BAPTISMS**

Clara Margret Beyer  
*born 9/26/2014 baptized 10/5/2014*

**WEDDINGS**

**BURIALS**

Edith Margaret Bruskewitz  
*died 1/8/2014 burial 1/13/14*  
 Roger G. Bartel  
*died 3/1/2014 burial 3/8/2014*  
 Donald Schnabl  
*died 3/24/2014 burial 3/29/2014*  
 Betty Johnson  
*died 9/3/2014 burial 9/7/2014*  
 Judith Winkelmann  
*died 9/27/2014 burial 10/5/2014*  
 Lilian Pfeifer  
*died 12/15/2014 burial 12/22/2014*

**MEMBERSHIP STATISTICS**

**Worship Service Attendance**

	2014	2013	2012
<i>Sunday</i>	6065	6496	7271
<i>Thursday</i>	1323	930	769
<b>Total</b>	<b>7388</b>	<b>7426</b>	<b>8040</b>
<b>Average</b>	<b>142</b>	<b>143</b>	<b>155</b>
Special services Average	70	67	71

**Bible Class Attendance**

Average weekly attendance 41

**Membership**

	2014	2013	2012
<b>Total Membership</b>	<b>267</b>	<b>290</b>	<b>287</b>
<b>Communicant Membership</b>	<b>235</b>	<b>247</b>	<b>247</b>
<b>Sunday School</b>	<b>28 (2yo-6th grd)</b>	<b>30 (2yo- 6th grd)</b>	<b>40</b>

**Communed 2014**

Members 2447 (2013: 2140; 2012: 2653)  
 Avg. per communion week: 94 (2013: 89; 2012: 102)

**TRANSFERS OUT**

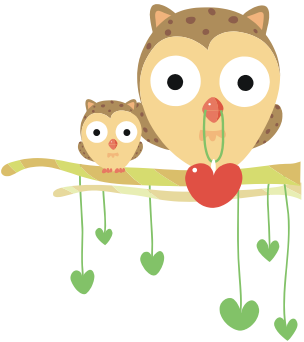
Kathy Stubbe  
 to Our Savior, Wausau  
 Wally & Noel Zorn  
 to Saving Grace, Mobile, AL

**RELEASED BY REQUEST**

Victoria Hill  
*Samantha, Gabriel & Sebastian*  
 Nathan & Michelle Klapoetke  
*Brayden & Beau*  
 Roger Peterson

**RELEASED**

Todd Bartel  
 David Bliske  
 Lenny Eichsteadt  
 Rose Hobbs  
 Diana Minster  
*Gabe & Noah*  
 Michael Rooney  
*Erica*  
 Jason Sharping  
 Karen Subbert  
*Clifford*



**Jesus Calls Me A Friend**

*“While he was still speaking, Judas, one of the Twelve, arrived. With him was a large crowd armed with swords and clubs, sent from the chief priests and the elders of the people. Now the betrayer had arranged a signal with them: ‘The one I kiss is the man; arrest him.’ Going at once to Jesus, Judas said, ‘Greetings, Rabbi!’ and kissed him. Jesus replied, ‘Friend, do what you came for.’ Then the men stepped forward, seized Jesus and arrested him.” Matthew 26:47-50*  
 The story of Judas’ betrayal is one we’ve heard many times. Because it is so familiar we may find it difficult to keep our minds from skimming over the details or wandering someplace else entirely. To guard against this, it’s helpful to think about each word or phrase, letting us paint a picture in our minds, asking what these details of the story add to what we already know. When going through this exercise, the word “friend” may jump out of Matthew’s writing as a bit peculiar, given the story line. As we spend some time thinking about it, we realize a great invitation is conveyed in that one word. Judas had been a member of Jesus’ inner circle: a disciple, a missionary and a friend along with the other eleven. It wouldn’t be unusual for Jesus to address him as a friend. But we know the rest of the story. We know the holy, sinless Son of God extended friendship to the man whom we now consider one of the most despised characters ever to be named in Scripture. When he did it, Jesus knew everything there was to know. He knew that Judas had betrayed him for thirty measly pieces of silver. He knew that the kiss he had just received from the betrayer’s lips had delivered him into the hands of his tormentors. He knew all this and more. Yet he called him “friend!” In that last fleeting moment Jesus let him know that in spite of Judas’ treachery and betrayal, Jesus would not betray his friend. That night in the Garden of Gethsemane the Savior’s full gospel invitation was pressed into that one little word.

Our sins, along with those of Judas, were heaped on Jesus’ shoulders that night, and stung his flesh with whip and nails. Jesus reaches out to you and me in the same way he extended the hand of friendship to Judas. We too are included in those pain-racked words **“Father, forgive them!”** (Luke 23:34) Jesus turns to us and calls each of us “Friend.” We’ve certainly done nothing to earn the honor and privileges associated with these words. If we examine our own sins, betrayals, and omissions, they may look much more like those of Judas than we care to admit. If we are honest with ourselves, we might even find ample reason to despair of all hope. But don’t do it! Jesus implores us to repent of every sin, no matter how horrible, and he welcomes us back, no matter how far we’ve strayed. He wants each of us to be his friend!

Written by Marilyn Miller  
 Reprinted from the WELS Womens’ Ministry website  
 Used with permission.  
[www.wels.net/womens-ministry](http://www.wels.net/womens-ministry)



**Anniversaries**

2/2 Scott & Victoria Hill (19)  
 2/26 Steve & Heather Jansen (15)




**Birthdays**

2/1 Donna McKay  
 2/3 Gloria Raatz  
 2/5 Carson Sigourney  
 2/7 Emily Bohn  
 2/8 Nathan Klusmeyer  
 2/10 Colleen Zahn  
 2/11 Woody Woodruff  
 2/12 Carol Greathouse  
 Jean Lemke  
 2/14 Michelle Wedde  
 2/19 Jackie Putskey  
 2/20 Jan Schroeder  
 2/21 Trish Reitz  
 2/22 Bev Walker  
 2/24 John Benz  
 2/26 Bob Wedell  
 Keri Fredin



If we missed your birthday or anniversary, that means the church does not have it. Please drop off dates at the church office, call 787.3856 or email [peacelutheran@centurytel.net](mailto:peacelutheran@centurytel.net).

Your Father knows  
 what you need before  
 you ask Him.



-Matthew 6:8






## Midweek Lenten Dinners

Our midweek Lenten Dinners will be on Thursdays, February 26, March 5, 12, 19, and 26. If you are interested in hosting a midweek meal, please use the sign up sheet on the back table in the fellowship hall. Please see Christine Bohn (920-787-3856) with any questions about our midweek meals. And, even if you don't host, your entire family is invited to join us on those evenings from 5-6:30 pm for a free meal and great fellowship prior to our midweek Lenten worship services. Bring a friend or neighbor!

## Circle of Peace Saturday, February 14 9 am

Curious what we do? Interested in women's ministries? Want to serve but don't know where? Join us at Circle of Peace! All the ladies of Peace are invited to join us!



### Pine Car Derby

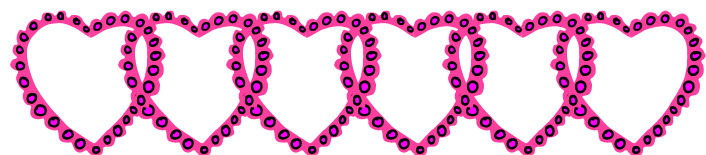
**Sunday, February 22, 2015 at 12 pm**

Cheer on your favorite car or get your own Pine Car and enter the Open Class of the Pioneers 2015 Pine Car Derby! Join the fun as we race our way to victory!

Appetizers & Pine Car Registrations 12—1 pm  
*If you wish, you can bring an app-to-pass*

Races start promptly at 1 pm

*Please see Kevin Bohn (920-765-2146) to get a car if you'd like to enter the Open Class. The Open Class is open to anyone, any age, who isn't a Pioneer. The cost to enter the Open Class is \$5 to cover the cost of the car.*



## Is Your Family Involved?

**It's never to late to join in on the fun we have here at church with our various youth groups!**

### Mornings with Mommy

1st & 3rd Mondays at 10 am

*An educational playdate for moms and their infants through preschoolers. Pre-registration is required for each session. \$5 per family fee per session.*  
Contact: Ahnsharee Klusmeyer 920.539.3560

### Sunday School every Sunday at 10:15 am

*Classes for ages 2 years old- 6th grade*  
Contact: Bob Mitchell 920.291.5166

### Lutheran Boy & Girl Pioneers

2nd & last Sundays at 1 pm

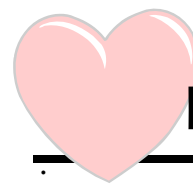
*The Pioneers is a youth ministry, open to ages Kindergarten and up, that serves to teach life and leadership skills, and to nurture Christian friendships that last into eternity.*  
Contact: Christine Bohn 920.765.2147

### JAM Session 1st & 3rd Wednesday at 5:30pm

*Anyone from 8<sup>th</sup> grade through high school is invited to join us. We begin with a light supper, Pastor leads us in devotion and we either have a fun activity or work on a service project.*  
Contact: Megan Kubasta 920.787.4275



John 15:13



# Board of Elders & Bible Studies

## Board of Elders Annual Report

*Please see page 3 for a complete list of the Board of Elders membership.*

The Elders as ministers of Christ and assistants to the shepherd (our pastor)

Our church bylaws Section 4B states:

"This board shall concern itself with the total spiritual life of the congregation.

It shall visit, counsel and encourage members who have manifested a lack of concern for hearing God's Word, and the reception of the Lord's Supper and who have shown a general disregard for the works of the church."

We want to thank everyone for their time, talents and support you have given our church.

Working with Pastor to restore inactive members continued to be a major effort in 2014 and will continue to be in 2015. I urge each of you to personally and lovingly encourage our fellow members, who have strayed from hearing God's Word, to return and worship with us. A visit, phone call or note from you means so much more to a straying person than a contact from Pastor Riedel and the Elders. Think about it; is there anything more important than a person's eternal soul? After numerous contacts and visits are made, we thank our Lord that some of our straying members have returned to worship again with us. Sadly, some will not be interested in returning to worship with us and will be removed from our membership roll; yet we continue to pray for their return. In His service,

*Watson Woodruff*

Watson Woodruff (920-787-2685)  
Chairman, Board of Elders



## Bible Studies

There are a variety of opportunities to dig into God's Word at Peace. Please feel free to attend the following courses. And if there is a topic you wish to study, let Pastor know- he is always looking for input. As we gather around the Word, we grow in knowledge and faith, and we are equipped for service in God's kingdom.

**Bible Information Class (BIC)** - This is an overview of basic Bible doctrine. It is designed for those who wish to join our congregation, but is great for anyone who wishes to "beef up" on their knowledge of the basic teachings of Scripture. Call Pastor to schedule this class.

**Sundays at Peace** - Our Sunday morning study meets in the "chapel room" at 8 am. Men, women, and teens at all levels of Bible knowledge are invited to attend. This Bible study repeats Thursdays after church.

**Tuesday & Thursday** - Our Tuesday morning study meets in the "chapel room" at 9 am. A duplicate of our Tuesday class, Thursday morning class meets at the Lakeshore Restaurant from 9-10:30 am. Men and women of all ages and Bible knowledge are welcome.

**Confirmation- Level 1** Confirmation is a brief study of the Old & New Testaments. The course, "From Promise to Glory," uses an interactive DVD to make learning visual, stimulating, and fun. The class is an overview of the Bible's history, walking the students through God's promise of salvation in the Garden of Eden, to the glorious home in heaven for which we are preparing. Level 1 is for first year Confirmation students.

**Level 2 Confirmation** is our "traditional catechism class." Designed to be more in-depth, this class takes the students deeper into the doctrines, or teachings, of God's Word. We study the chief parts of the Bible as outlined in Luther's Catechism. Level 2 is for 2nd and 3rd year students and meets on Sundays at 10:15 am.

**Sunday School** - Sunday School is where you'll find the younger sect of our congregation. We offer classes for all children, 2 years old through 6th grade on Sunday mornings, September- May, at 10:15 am. 7 & 8 grade students are either in Confirmation or are invited to assist with the Sunday School program.

**For more information on any of the Bible Classes offered at Peace, or for current topics, please talk to Pastor Riedel.**

Psalm 46:10

"Be still,  
and know that I am God."





## Committees

### Audit Committee Report

We have reviewed the records of the treasurer and financial secretary and found them to be in good order.

The Audit Committee

Dallas Krueger, Tom Kuenn & Watson Woodruff

### Education— Communication Committee

Pioneers are in their ninth year at Peace, with 5 leaders and 22 Pioneers. The JAM Session meets twice a month on the 1st & 3rd Wednesdays. Sunday School, in addition to class, hosts coffee hour, participates in a Christmas service and sings often during church. Level 2 Confirmation is now meeting on Sunday mornings. Tuesday Bible study is held at 9 am & Thursday Bible study is held at Lakeshore at 9 am, with growing attendance. There is also Bible Class on Sundays at 8 am. The church librarians have been very busy and will continue to be busy! This past year, they were a featured story on the Kids Connection, hosted coffee hour, hosted a monthly summer story hour and attended the Librarians' Conferences. They plan on traveling to Minnesota in the Spring for a conference.

Check out the church website at [wautomapeacelutheran.org](http://wautomapeacelutheran.org). Many thanks to Pastor Klusmeyer for being our non-paid webmaster! We are on Facebook- become a fan! We post regularly.

I would like to thank Bev Walker, Barb Bartel, Beth Riedel, Ahnsharee Klusmeyer & Christine Bohn for serving on the Committee & to everyone who works in any aspect of this committee.

The goal of the EDU Committee is to reach each and every one of our members with the Word of God. Education is not just for the children of congregation, it's for each one of us!

2015 welcomes a new Education-Communication Committee Chairman- Bob Mitchell. I have no doubt that he will be Jesus-focused and committed to the charge of Christian education here at Peace. As I leave this position after seven years, I pray that our congregation sees the benefits of Christian education for all ages and I hope we all keep growing in the Word!

Kevin Bohn (920-765-2146)

Outgoing Education-Communication Committee Chairman



### Finance Committee

About mid-summer, we were running behind on our budgeted goals, as well as projects that we had committed to including tuition support, the Sunday school roof project, and the storage building. Along with the Stewardship Committee, we put out a drawing of a ladder with the rungs showing the different levels of offerings for the past two years. We asked for your help by taking the next step up the ladder. Many of you took the next step and we thank those who did so. We were able to meet all our financial commitments including the special projects listed above.

This year we again have an aggressive budget as well as two major improvement projects: completely remodeling the parking lot and major improvements to the parsonage. Once again, we are hoping the Lord will move us all to take the next STEP.

The 2015 offering envelopes are in the mailboxes. Please use these envelopes for your offerings so that we can provide you with a statement of your offerings as a matter of good fiscal procedure and for tax purposes.

I would like to thank all our money counters and a I'd like to offer a special thank you to my assistant, Mary McKay for all her work with data entry and the year-end reports.

Let's all work together and have another successful year!

DuWayne Bartel (920-787-7488)

Financial Secretary

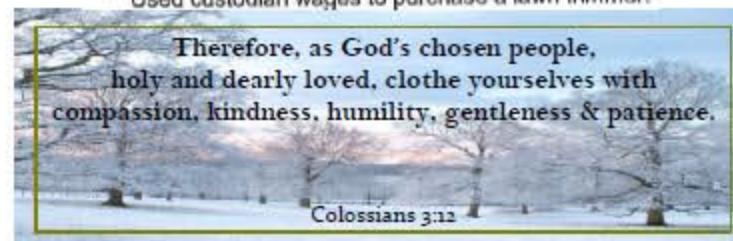


## Financial Reports

### 2015 Budget

REVENUES	2014	ACTUAL	2015
General Fund	192,000.00	185,782.91	194,500.00
Interest	.00	19.66	.00
<b>Total Revenues</b>	<b>192,000.00</b>	<b>185,802.57</b>	<b>196,515.00</b>
<b>EXPENDITURES</b>			
Pastor-salary	41,425.00	41,425.00	42,181.00
Mileage Allowance	4,000.00	3,287.76	4,000.00
Housing Equity	621.00	621.00	633.00
Organist	2,700.00	2,025.00	2,700.00
Office Sec.	15,600.00	15,457.50	15,990.00
Custodian	4,800.00	391.88*	4,000.00
Treasure/Financial Secretary	1,000.00	1,000.00	1,000.00
Employer Social Security Tax	5,288.00	4,856.78	5,315.00
Health Insurance	21,500.00	21,108.00	22,000.00
Pension	2,400.00	2,496.00	2,500.00
Guest Pastor/Organist	1,200.00	2,079.00	1,200.00
Electricity	5,000.00	4,990.19	5,000.00
Heat	7,000.00	8,064.74	8,600.00
Water & Sewer	2,800.00	2,754.24	2,800.00
Telephone/Internet	1,500.00	1,468.60	1,500.00
Bldg. & Grds.	10,600.00	9,752.19	9,300.00
Insurance (BLDG,LIAB,WC)	6,000.00	4,107.00	5,200.00
Local Missions			
Communication - Education Budget	8,000.00	8,406.50	8,000.00
Outreach Committee Budget	1,200.00	815.83	1,200.00
Stewardship Committee Budget	.00	.00	100.00
Kitchen Supplies Budget	500.00	715.27	500.00
Worship Committee Budget	300.00	195.00	300.00
Evening Guild Budget	500.00	405.87	500.00
Financial Secretary Budget	460.00	428.03	400.00
Office Budget	2,300.00	2,443.04	3,000.00
Treasurer Budget	350.00	376.02	200.00
School Tuition	20,090.00	20,090.00	20,000.00
Missions	19,200.00	19,200.00	19,200.00
Camp Phillip	1,800.00	1,800.00	1,800.00
LWMS	75.00	75.00	75.00
Peace Improvement Fund	3,600.00	3,600.00	2,400.00
Loan Payments			2,400.00
Misc./Other	191.00	455.56	506.00
<b>Total Expenditures:</b>	<b>192,000.00</b>	<b>184,891.00</b>	<b>194,500.00</b>

\* Used custodian wages to purchase a lawn trimmer.



Therefore, as God's chosen people,  
holy and dearly loved, clothe yourselves with  
compassion, kindness, humility, gentleness & patience.

Colossians 3:12



2014 Financial Statement

BEGINNING BALANCE – January 1, 2014 (checking acct)		28,467.48
RECEIPTS		
General Fund	185,782.91	
Gifts	39,757.84	
Checking Acct. Interest	19.66	
Reimbursements	2,471.31	
Memorial	3,665.00	
Library Book Sale	435.47	
Loan	10,000.00	
Total Receipts	242,132.19	
TOTAL AVAILABLE FUNDS		270,599.67
EXPENDITURES		
Pastors Salary	41,425.00	
Mileage Allowance	3,287.76	
Housing Equity	621.00	
Organist	(2,025.00)	1,870.07
Office Secretary	(15,457.50)	13,566.96
Custodians		391.88
Treasurer/Financial Secretary	(1,000.00)	923.52
Social Security & Withholding Tax		7,323.50
Health Insurance		21,108.00
Pension		2,496.00
Guest Pastor/Organist		2,079.00
Electric		4,990.19
Heat		8,064.74
Water & Sewer		2,754.24
Telephone/Internet		1,468.60
Bldg. & Grds.		9,393.82
Insurance (BLDG,LIAB,WC)		5,047.00
Local Missions		
Communication/Ed Budget		8,406.50
Outreach Committee Budget		815.83
Stewardship Committee Budget		.00
Kitchen Supplies Budget		715.27
Worship Committee Budget		195.00
Evening Guild Budget		405.87
Financial Secretary Budget		428.03
Office Budget		2,443.04
Treasurer Budget		376.02
School Tuition		20,090.00
Missions		20,200.00
Camp Phillip		1,800.00
LWMS dues		75.00
Peace Improvement Fund		.00
Misc./Other		455.56
Non-Budget Expenditures	40,649.97	
Total Expenditures	223,867.37	
ENDING BALANCE – December 31, 2014 (checking acct)		46,732.30
Funds Balance in the checking acct	44,638.58	
Total Usable Funds	2,093.72	



Worship Committee

The Worship Committee was established approximately eight years ago with the purpose of assisting the pastor with planning of the worship services. A lot of organization and planning goes into every service conducted in our Church. Pastor Riedel leads the planning with input from the committee. Pastor first presents the readings for each service, including Old Testament and New Testament, along with the sermon text before choosing hymns, special music and other additions that may be appropriate. We meet usually monthly, but sometimes more time is needed in planning at certain times of the year and an extra meeting is necessary. This is usually during Lent, Advent and Christmas seasons of the church year. *Please see page three for committee members.* If any congregational member has any questions or input regarding our service planning, please feel comfortable speaking with any of the members of this committee. Respectfully submitted, Marilynn Chesbrough (920-787-2519) *Worship Committee Chairperson*

**Church Library**

This past year, we had our monthly Summer Story Hours and did a summer reading challenge. We also held an NPH book fair. In 2015, we are planning on attending the Spring WELS Librarians' Organization conference in Minnesota. We are looking forward to hosting Summer Story Hours again. You will want to be watching for a new bookshelf in the library coming soon! It will be a Family Resource Center and will include a binder with local and congregational resources, games, movies, music, books, and devotionals that are all family-friendly. The Church Library is always interested in what you want! If there is a book, DVD or CD that you would like to have in our library, please let either Emily know your suggestion! We look forward to serving you and the Church Library! Emily Bohn (920-765-2146) Emily Riedel (787-7078) *Librarians*

Maintenance Committee

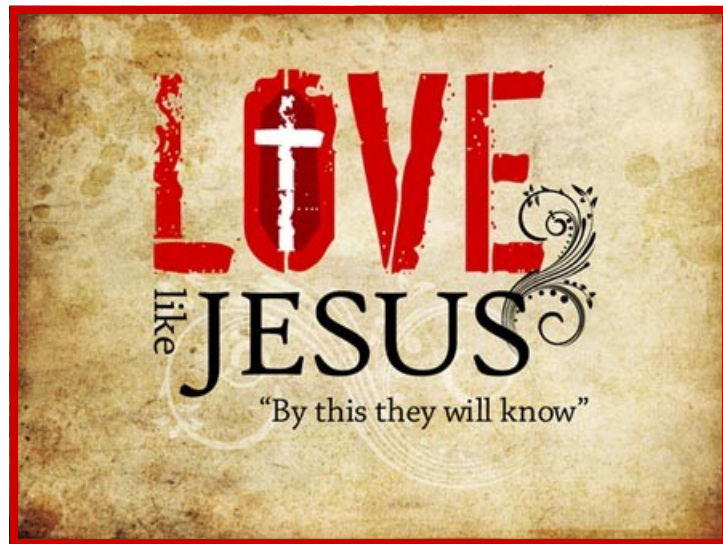
Major projects in 2014 included the building of our new storage shed, replacing the roof over the Sunday School rooms, replacing the damaged carpet in the front entry way with tile, and re-waxing of the fellowship hall, kitchen and hallway. An energy audit was done on the church and the parsonage and upgrades were completed to all the lighting. I will monitor the electric bills for proof of payback. Many important improvements and repairs were accomplished this past year, including minor repairs to pew hymnal racks and sink drains. Many volunteers were responsible for preparing the church for the Advent season. They deserve your thanks! Volunteers clean the church each week. They deserve your thanks! Projects for 2015 include some major, but much needed improvements. The parking lot needs to be resurfaced. The parsonage kitchen needs to be remodeled. The carpets in the church need to be cleaned. The SW entry way needs to be tiled to match the new foyer. New lighting needs to be added to our parking lot for safety. We can make this happen! All of the walkways to the church need to be cleaned of snow for safety. This takes volunteers. The lawns, shrubbery and gardens need to be tended to. This takes volunteers. Repairs, re-cleaning, and re-painting of all of our church's buildings is a constant task. This takes volunteers! This is OUR church. Please volunteer to keep it beautiful. *A list of committee members is on page three.* Bob Lang (414-313-0662) *Maintenance Committee Chairperson*

FUNDS BALANCE	
Pastor education	193.19
JAM Session	852.60
Sunday School	93.68
Hymnals	20.30
Library	157.80
Choir	1,376.84
Hearing Devices	200.30
Pioneers	201.73
Organ Fund	1,661.07
Student Assistance	1,018.17
Playground Equipment	252.31
LWMS	10.00
Improvement Fund	23,424.65
Website	20.00
Vacation Bible School	91.00
Parking Lot Fund	14,563.44
Flower Fund	150.00
Montello Tuition	301.50
Outreach – Easter for Kids	50.00
Total Checking Acct.	44,638.58
LOAN BALANCE	
	10,000.00

The roofing project is complete. The \$3400 remaining in the Roof Fund was transferred to the Parking Lot Fund.

Money from the Improvement Fund was used to pay the remaining \$13.53 for the computer and \$166.50 for the water heater.





## JAM Session

JAM (Jesus And Me) Session meets the first and third Wednesday of each month from 5:30-7 p.m. Anyone from 8<sup>th</sup> grade through high school is invited to join us. We begin with a light supper, Pastor leads us in devotion and we either have a fun activity or work on a service project. We invite you to join us! If you would be interested in helping out with JAM, please come talk to me! Megan Kubasta (787-4275) *JAM Session Leader*

## **Lutheran Boy & Girl Pioneers**

With each year that passes, I am amazed at how the Pioneers has touched the lives of not only the families and the youth who participate, but mine as well. Nine years ago, I stood up in front of a group of ten kids and stuttered my way through our very first meeting. How time has calmed my nerves, and given us, as leaders, opportunities to share our lives with these kids in ways I never imagined! We are leaders, yet learn so much from them.

The Lutheran Pioneers and Lutheran Girl Pioneers, national organizations, affiliated with WELS, but completely self-sufficient (no synod money goes to either the Boy or Girl Pioneers), were started about 60 years ago, in response to the Scouting movement. People in the WELS wanted to give our youth someplace to experience a group like the Scouts without the underlying doctrinal errors found in the Scouts.

I would like to thank the members of the congregation for supporting us and knowing how important the Pioneers ministry is. It gives the kids a sense of belonging here. It gives them the hope of faith and the fun of being with other Christians.

This is our ninth year at Peace; we are celebrating with the largest group we've ever had—ten Girl Pioneers, ten Boy Pioneers, two junior leaders and five leaders. Ten of our Pioneers are not members at Peace and of those, five Pioneers are unchurched. Beth Riedel is our Sunbeams leader (girls, kindergarten–2nd grade), Christine Bohn is our Girl Pioneers leader (grades 3-8), Kevin Bohn is the Trainmaster (boys, all ages), Pastor Riedel is our Chaplain and also helps lead the Boy Pioneers, and Ahnsharee Klusmeyer assists wherever needed.

This year, we had six girls and three leaders attend the National Lutheran Girl Pioneers Convention in La Crosse in October, we helped assist worship with Pioneers Sunday, in November we hosted our annual Chili Dinner and the Girl Pioneers hosted Advent by Candlelight, we clean the church kitchen in January, are hosting an outing to go on a sleigh ride and ice skating, host our annual Pine Car Derby in February, go camping with a Pioneers group from Marshfield in the summer and so much more!

Looking back, we see the fun we've had; looking forward, we see unlimited possibilities for our group.

If you or someone you know would like to help at meetings, or if there is a child in your life, ages Kindergarten and up, who would like to join Pioneers, please give us a call!

*Kevin & Christine Bohn (920-765-2147)*

*Pastor & Beth Riedel (920-787-7078)*

*Ahnsharee Klusmeyer (920-539-3560)*



## LWMS

*(Lutheran Women's Missionary Society)*

Peace is a member of the Wolf River Circuit of LWMS. The purpose of our organization is to support our Synod missionaries in whatever way we can: to encourage them whether through prayers, special gifts for various occasions, or cards to their family members to let them know we are here to support them. In 2014, our missionaries were: Adam Gawel, missionary in Southeast Asia, Pastor Youn Soo Park of the Korean Lutheran Church in Des Moines, WA, and Pastor Benjamin Zahn of Myrtle Beach, SC. The Wolf River Circuit hosts two rallies every year and includes all churches within the Circuit. The Rallies usually begin at 8:30 am and end with a luncheon provided by the host congregation at 12:30 pm.

On October 25, our congregation, along with Trinity, Redgranite, hosted the Fall Rally at Peace. A beautiful display of all the country flags where our Synod has a presence was displayed in the sanctuary of the church. A special thank you to the ladies of Immanuel, Wau-paca, for delivering the flags to our church (and also picking them up after the rally and transporting them back to the International Headquarters in Milwaukee). The theme of the Rally was *"I Am The Good Shepherd"*. Pastors Peter and Josh Kesting were our main speakers and presented a "true life" presentation of their experience among the people of Zambia, Africa.

Unfortunately, none of our members were able to attend the Annual Convention in Dallas, TX. The 2015 Rally will be held in Rapid City, SD with the theme "Lift High the Cross in the Hills".

The Spring Rally of the Wolf River Circuit will be held on April 11, 2015 at St. John, rural Appleton. We thank the Lord for you, the members of Peace, for all your support of LWMS. Please consider joining us at our Spring Rally.

In His Service,

Marilynn Chesbrough (920-787-2519)

*LWMS Reporter*

## Mornings with Mommy

We have been meeting on the first and third Monday of each month. So far, we have been able to serve and get to know lots of families from our community. We have had a lot of fun singing and playing together, working on arts and crafts, and exploring fine and gross motor skills.

In April, we spent the morning at Blue Ribbon Kid's Day and hope to do the same this upcoming year.

If you are interested, we still have some cookie cook-books for sale for \$10. They make great gifts! We have brochures and business cards available to hand out to

people you think could benefit from this program. Please see me, Everett Schulz, or stop by the church office to pick some up.

Thank you for all of your prayers and financial support. We are truly blessed through you!

Ahnsharee Klusmeyer (920-539-3560)

*Mornings with Mommy Program Director*

## Sunday School

We have classes for 2 years old through 6th grade (7 & 8 graders are in the Level 2 Confirmation class taught by Pastor, held at the same time as Sunday school classes) and meet each Sunday from 10:15-11:30 am September through May.

*Please see page three for a list of our staff.*

We have are in year two of the new ChristLight curriculum specifically designed for Sunday School use. The teachers and students are enjoying using this resource, which differs from Lutheran day school curriculum—no more do we hear: "We did that in school!" Talk with any staff member with any questions about the curriculum.

This year, we said good-bye to our long-serving superintendent, Bob Mitchell (only to welcome him back as Education-Communication Committee chairman), and welcomed Joshua Klamm as our new superintendent. Joshua has volunteered at church working with maintenance and has also helped with VBS. He currently is a senior at Wautoma High School, works at Parkside Middle School with the after-school program and plans on attending Fox Valley Tech School after graduation. The Sunday school rarely stays the same from year to year; we are often trying different things. This year, classes are separated differently than the usual two grades in each class. First, second and third grades are together and fourth, fifth and sixth grades are together. This arrangement seems to be working well for the students. It is also working well for staff, as we are down one teacher this year.

Parents: Please check your child's papers when they get home from Sunday School to see what they're learning. Sunday School is an extension of your family! We are here to assist families in their job of teaching and preparing these young Christians for life.

If you ever have questions or issues about anything that your child is learning, please contact us! We encourage you to visit your child's class, to talk to your child's teacher and be as involved as possible!

The Sunday School staff would like to thank everyone who supports this ministry, financially, with prayers, and with service.

Joshua Klamm (262.989.8872)

*Sunday School Superintendent*